



MODAL 110

Exciter System

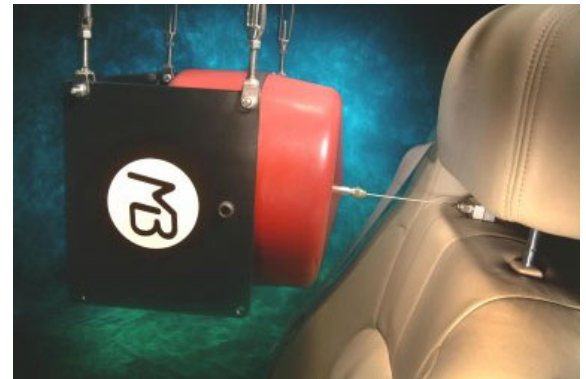


- ❖ **MB's Modal family has a new addition with a new look! Unveiling the MODAL 110 – longer – lighter – stronger – and **RED!****
- ❖ **MB MODAL EXCITERS are the #1 selling exciters in the world – over 1000 in use in over 18 countries!**

The new MODAL 110 delivers 110 lbs force (500N) and 1.5" stroke pk-pk; has twice the force and 50% more stroke than the MODAL 50.



- ❖ **Long Stroke**
- ❖ **Light moving element mass**
- ❖ **Low longitudinal stiffness**
- ❖ **Stiff radial stiffness**
- ❖ **Neodymium magnets**
- ❖ **Much lighter exciter weight**
- ❖ **Thru-hole to attach stinger**



MODAL 110 EXCITER SPECS	MB750VCF AMPLIFIER SPECS
<ul style="list-style-type: none"> ❖ Force: 110 lbf peak (500 N) forced-air cooled; 55 lbf pk (250 N) convection ❖ Force: 75 lbf RMS (350 N) forced-air cooled; 40 lbf RMS (175 N) convection ❖ Stroke: 1.5" (38 mm) p-p; 1.6" (41 mm) between stops ❖ Bandwidth: DC-5000 Hz ❖ Moving element: 0.9 lbs (0.4 kg) ❖ Longitudinal stiffness; 30 lb/in (5.2N/mm) ❖ Shaker weight: <48 lbs (22 kg) ❖ Shaker cooling: shop air, with integral air coupling; aux. fan cooling package ❖ Clearance hole through armature for stinger ❖ Compression and piano wire stingers, secured with collets and chuck nuts ❖ Overtravel protection ❖ Current limiting shutdown ❖ Options: Accessory Kit & Cooling Unit ❖ CE Mark 	<ul style="list-style-type: none"> ❖ Linear amplifier design ❖ Frequency range; DC-10,000 Hz ❖ AC or DC coupled, separate BNCs ❖ Current feedback and voltage feedback, external switch selectable ❖ 75 VRMS max. output voltage ❖ 10 ARMS max. output current ❖ Output current measurement, BNC ❖ Shaker overtravel shutdown ❖ Programmable current limiting ❖ Input power: 100, 120, 208, 220, 240V; 50/60 Hz (1.5 kVA) ❖ Sig. IN for max OUT: 1, 3, 10 Vpk ❖ Phase shift between output current and BNC value: <1 degree ❖ 19" rack mount x 7"H x 12"D (178 mm H x 305 mm D) ❖ Weight: 45 lbs (20 kg) ❖ CE Mark